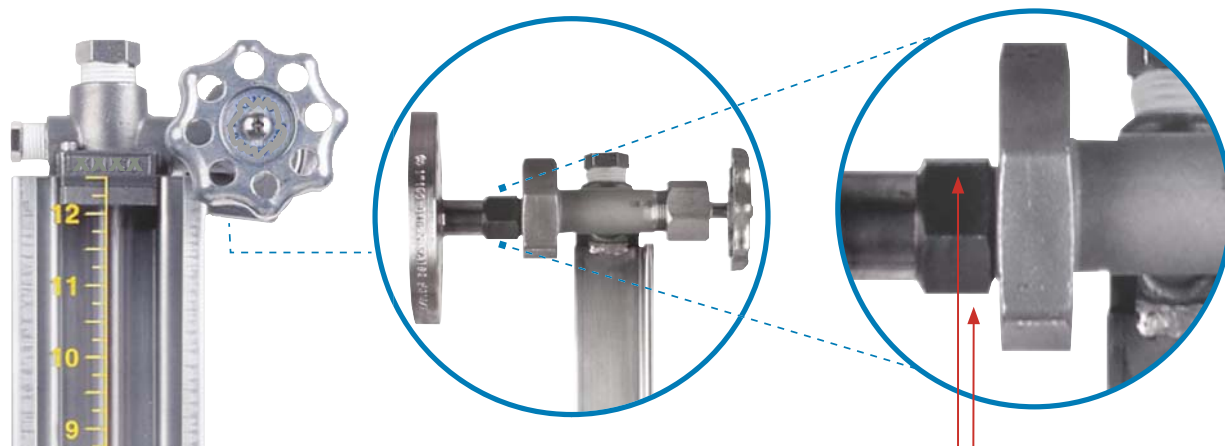


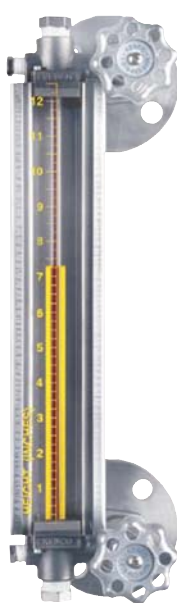


LIQUID LEVEL GAUGES

LG2-V ARMORED TUBULAR LIQUID LEVEL GAUGE WITH INTEGRAL VALVES AND MISALIGNMENT UNIONS



NEW, FLOATING MISALIGNMENT UNIONS ALLOW PROCESS CONNECTION CENTERLINES TO VARY $\pm 1/4"$



Series LG2-V Tank Gauge
w/ Optional Flange
Connection



Series LG2-VT Tank Gauge
w/ Integral Valve on
Bottom w/ Threaded
Connection on Top



Series LG2-VT Tank Gauge
w/ Optional Flange
Connection

The patented LG2-V Series Level gauge features an innovative casting design which will simplify the installation process and eliminate other typical problems associated with gauge glasses. The LG2-V incorporates floating misalignment unions, which will allow process connection centerlines to vary $\pm 1/4"$. The gauge also has integral offset pattern valves with ball check shutoffs. 1/2" vent and drain connections are inline for routine sight glass maintenance. The LG2-V Series Level Gauge delivers a safe, low maintenance, cost effective solution to common sight glass applications.

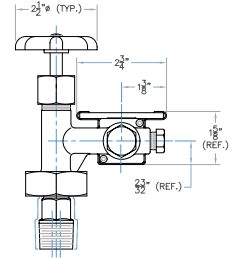
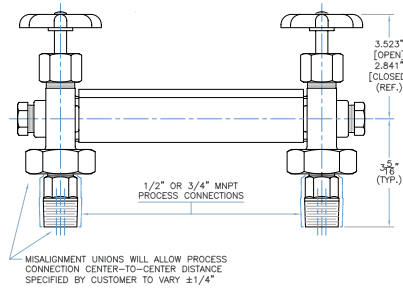
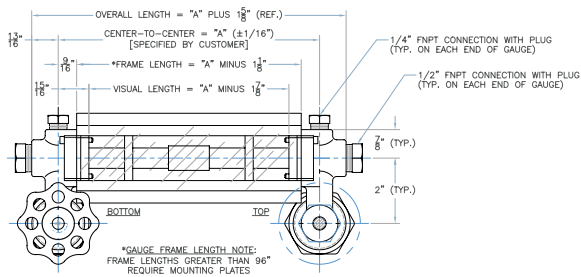
APPLICATIONS

- Low to Medium pressure applications up to 500 psi
- Bulk storage tanks
- Marine
- Low pressure scrubbers and surge tanks
- Seal pots

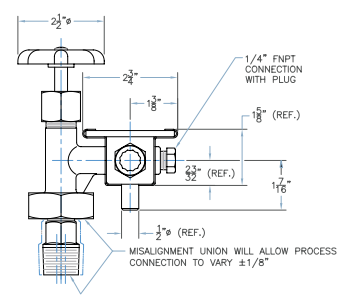
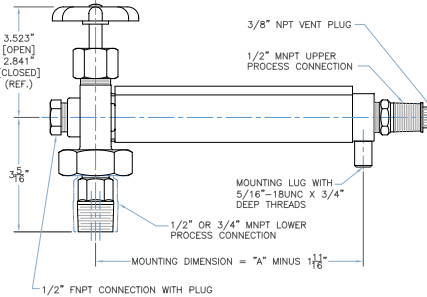
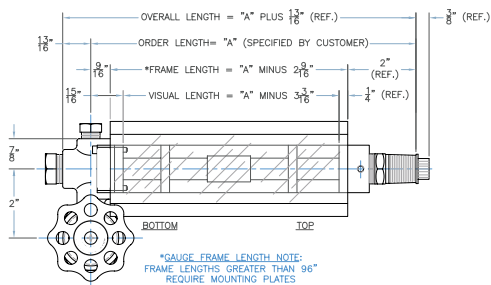
PRODUCT FEATURES

- Floating misalignment unions allow process connection centerlines to vary $\pm 1/4"$
- Offset pattern check valves with ball check shutoffs
- Ball check shutoff valves protect tank inventory
- Tubular sight glass allows for easy viewing of liquid level
- Innovative casting design includes all necessary mounting components up to process connection
- Rugged armored gauge construction protects sight glass from mechanical impact
- 1/2" vent and drain ports for routine gauge glass maintenance
- Additional 1/4" port available for optional mounting of other instrumentation for level gauge monitoring
- Custom scales for tank volume or other calibrations are available
- Armored frame and polycarbonate shield protect operator in case of accident
- ABS and DNV certified for marine applications

LG2-V LEVEL GAIRD LEVEL GAUGE



LG2-VT BULK TANK GAUGE



ORDERING SYSTEM

LG2-V Series Bulk Tank Gauge

COMPANY: _____ CITY: _____ STATE: _____ ZIP: _____

REQUESTED BY: _____ PHONE: _____ FAX: _____

ADDRESS: _____ EMAIL : _____

Gauge Style

LG2-V = Gauge with Top & Bottom Integral Valves
LG2-VT = Gauge with Integral Valve on Bottom and 1/2" MNPT x 3/8" FNPT Connection on Top

Process Connections

M50=1/2" MNPT
M75=3/4" MNPT
FL50=1/2" Flange
FL75=3/4" Flange
FL1.0=1" Flange
FL1.5=1.5" Flange
FL2.0=2" Flange

Center to Center Dimension (inches)

Material of Construction

C=Zinc Plated Carbon Steel
A=Stainless Steel

Seal Material

V=Fluorocarbon
A=Aflas
B=Buna-N
T =FEP Encapsulated Silicone
E=Ethylene Propylene

Shield Options*

L=Clear Polycarbonate
H=Height Scale
RH=Rate Height Scale
MH=Metric Height Scale
MRH=Metric Rate Height Scale
M=Expanded Metal Guard

Sight Tube Options*

GS=5/8" O.D. Glass
RL=5/8" O.D. Redline Glass

Maximum Working Pressure (PSIG)

Maximum Operating Temperature (°F)

Steam

S=Steam Application
NS=Non-Steam Application

* Based on application data provided, PAPAILIAS will select the appropriate sight tube material, i.e. high pressure glass.

J.G. PAPAILIAS CO., INC. - 245 PEGASUS AVENUE, NORTHVALE, NJ 07647 (201)767-4027, FAX(201)767-7870, SALES@PAPAILIAS.COM, WWW.PAPAILIAS.COM

[illegible]

DIMENSIONS ARE FOR REFERENCE PURPOSES ONLY AND ARE SUBJECT TO CHANGE AT ANY TIME WITHOUT NOTICE.

REV.	DATE	BY	ECN	EXPLANATION:
				<p>PAPILLAS INCOAT-002</p> <p>246 PEGASUS AVENUE, NORTVALE, NJ 07067</p> <p>ARMORED TUBULAR LIQUID LEVEL W. VALVES (OUTLINE DRAWING) SERIES LG2-V WITH NPT MALE PROCESS CONNECTIONS</p> <p>DATE: 12/11/06 SHEET: 1 OF 1 DRAWING NUMBER: DRN. BY: RPS CHKD. BY: DS SCALE: NTS LG2-V</p>

1/4" FNPT CONNECTION WITH PLUG
(TYP. ON EACH END OF GAUGE)

1/2" FNPT CONNECTION WITH PLUG
(TYP. ON EACH END OF GAUGE)

Technical drawing of a PAPA LILAS frame, showing dimensions and mounting details. The drawing includes a side view and a top view of the mounting plate.

Dimensions:

- OVERALL LENGTH = "A" PLUS $\frac{5}{8}$ " (REF.)
- CENTER-TO-CENTER = "A" ($\pm 1/16$ ") [SPECIFIED BY CUSTOMER]
- *FRAME LENGTH = "A" MINUS $\frac{1}{8}$ "
- VISUAL LENGTH = "A" MINUS $\frac{7}{8}$ "
- 1/4" (TYP.)
- 7/8" (TYP.)
- 2" (TYP.)

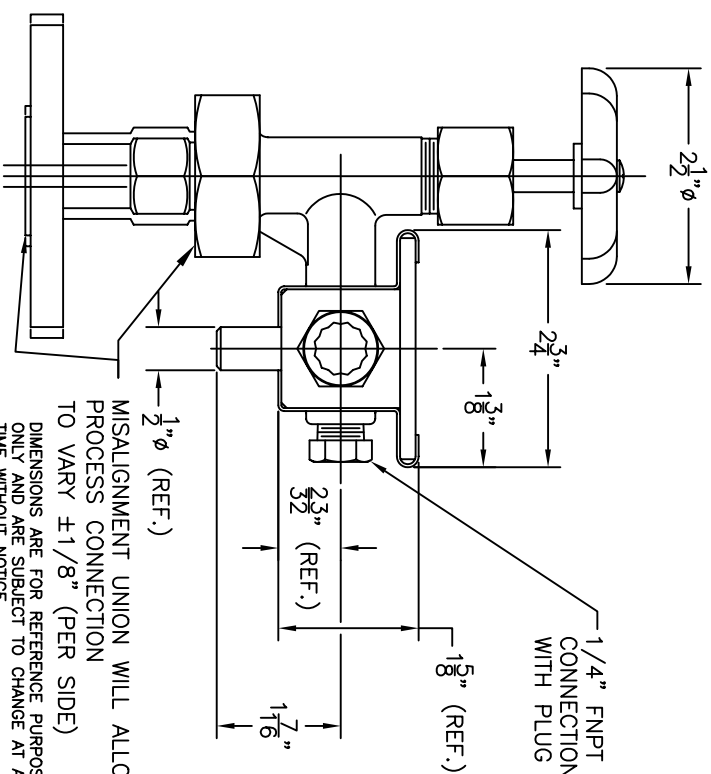
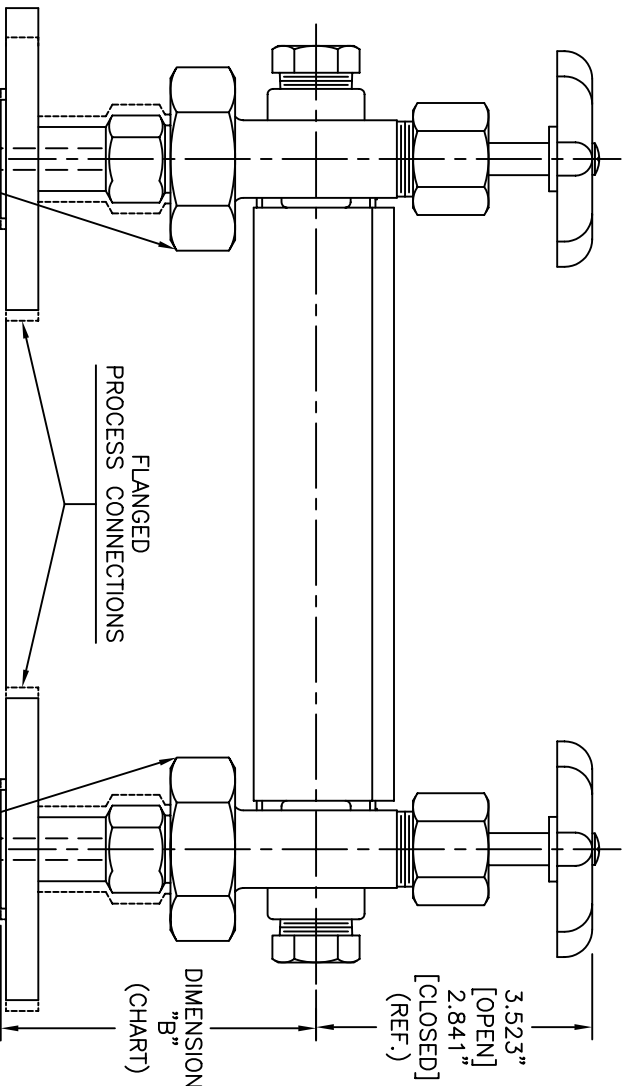
Labels:

- PAPA LILAS
- BOTTOM
- TOP

***GAUGE FRAME LENGTH NOTE:**
 FRAME LENGTHS GREATER THAN 96"
 REQUIRE MOUNTING PLATES

*GAUGE FRAME LENGTH NOTE:
FRAME LENGTHS GREATER THAN 96"
REQUIRE MOUNTING PLATES

DIMENSIONAL INFORMATION CHART	
FLANGE SIZE / RATING	DIMENSION "B"
1/2" 150 LB. R.F. PIPE FLANGE	3-21/32"
3/4" 150 LB. R.F. PIPE FLANGE	3-23/32"
1" 150 LB. R.F. PIPE FLANGE	3-25/32"
1-1/2" 150 LB. R.F. PIPE FLANGE	3-29/32"
2" 150 LB. R.F. PIPE FLANGE	3-31/32"



MISALIGNMENT UNION WILL ALLOW
PROCESS CONNECTION
TO VARY $\pm 1/8"$ (PER SIDE)

DIMENSIONS ARE FOR REFERENCE PURPOSES
ONLY AND ARE SUBJECT TO CHANGE AT ANY
TIME WITHOUT NOTICE.

MISALIGNMENT UNIONS WILL ALLOW PROCESS CONNECTION CENTER-TO-CENTER DISTANCE SPECIFIED BY CUSTOMER TO VARY $\pm 1/4"$

REV.	DATE	BY	ECN	EXPLANATION:
				PAPA LILIAS

COPYRIGHT 2006 - J.G. PAPPALAS CO., INC. - ALL RIGHTS RESERVED

PAPA ILLIAS INCORPORATED

246 PEGASUS AVENUE, NORTHVALE, NJ 07647

ARMORED TUBULAR LIQUID LEVEL W. VALVE
(OUTLINE DRAWING) SERIES LG2-VF

WITH FLANGED PROCESS CONNECTIONS

DATE: 12/11/06	SHEET: 1 OF 1	DRAWING NUM
BY: BPS	CHKD BY: DS	
DPN		

DATE: DT.	TIME: DT.	LG2-VF
SCALE: NTS	REVISION:	